

# LAKE COUNTRY MUSEUM

Lake Country Heritage and Cultural Society  
Volume 7      Number 1      Winter - 2013

## Lake Country Museum Hours

Monday      1:00pm - 4:00pm  
Wednesday      1:00pm - 4:00pm  
Saturday      1:00pm - 4:00pm

## Inside this Issue

District Displays      1  
Upcoming Events      1 & 3  
Volunteerism      2  
Lecture Series      2  
Memorial      3



## March District Display



The 'Old Timers' display at the District of Lake Country office (above) featured clocks and watches from the past. One of the highlights is a large pendulum clock that used to hang in Petrie's Lakeshore Inn during the early 1900s. An 1885 steeple clock and an Ingraham mantle clock are also displayed. Another feature is an Empire character pocket watch that includes a cowboy on the face who appears to move in the saddle on each second. There is also a 1912 Elgin lady's wristlet. It is actually a tiny pocket watch in a special leather case so that it can be worn on the wrist.

## January District Display

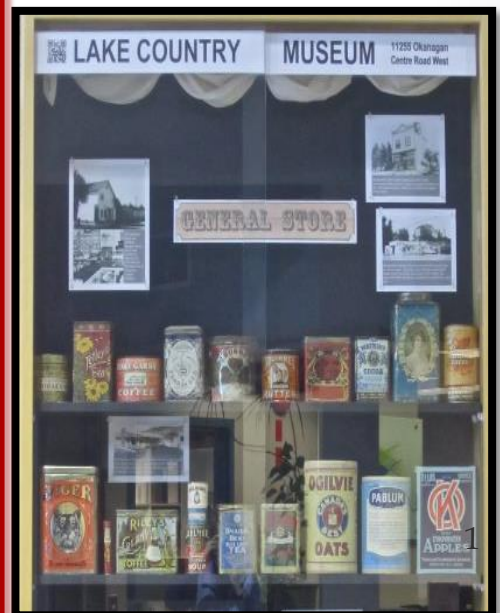
The District of Lake Country January display paid tribute to the past "General Stores" of the area (below), offering an assortment of tins, canisters, and glassware. The containers are from the museum's large store collection. Kelowna Pride Tobacco, Ogilvie Oats, OK Evaporated Apples, and Bulman's Cabbage Flakes were produced locally. Lake Country had numerous General Stores including Glead's, Red and White, Strickland's (all in Okanagan Centre) Winfield, Hillside, Woodsdale, (in Winfield), and Smith's (in Oyama).

## **Notice of Annual General Meeting**

The Lake Country Heritage and Cultural Society/Lake Country Museum Annual General Meeting will be held on Wednesday April 24, 2013 at the District of Lake Country, Carr's Landing Room and Council Chambers 9:00am to 12:00 pm. 10150 Bottom Wood Lake Road.

Lunch will be provided.

Your continued support is of value and appreciated. We look forward to seeing you there.



## Volunteer Corner

A big welcome to our new volunteers:

- ❖ **Ruth Derkson** (photo unavailable), who is working in the Archives,
- ❖ **Nancy Netting** (photo unavailable), will be working with the family history interviews,
- ❖ **Kyle Fitzpatric** (below left), is an intern from



Okanagan College who is working with the Harvey insect collection under the direction of Ward Strong and Dan Bruce.

***Volunteers your time and contributions are very much appreciated!***

### Call for Volunteers

For further information on volunteer opportunities contact [Shannon Jorgenson](mailto:Shannon.Jorgenson@lchm.com) by email or 250-766-0111. Lake Country Heritage and Cultural Society is located at 11255 Okanagan Centre Road W, Okanagan Centre, BC V4V 2J7

## Volunteer Recognition

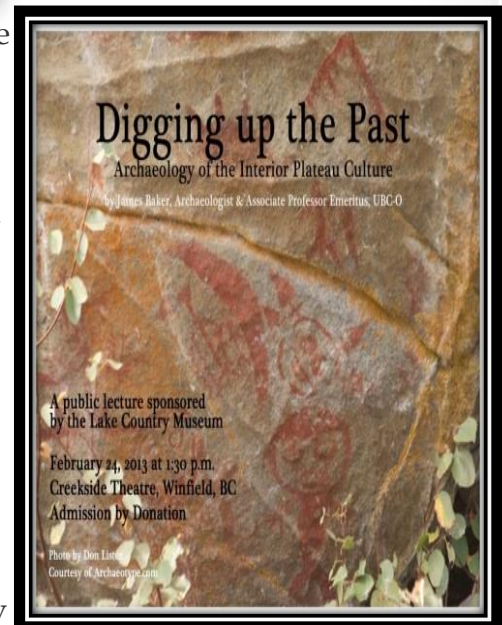
***Congratulations to Rosemary Carter!***



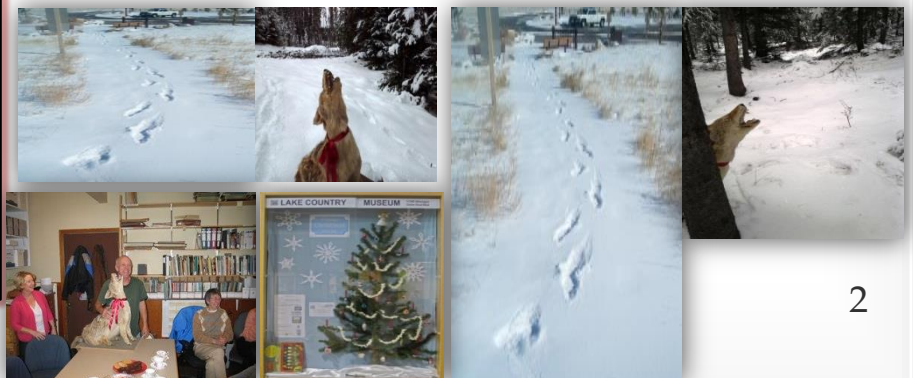
The Lake Country Heritage and Cultural Society are pleased to congratulate Rosemary Carter on receiving the Distinguished Community Service Award for her community and volunteer work in heritage. Rosemary, who has made extensive contributions to heritage preservation throughout the Okanagan, was presented with the award by the Central Okanagan Heritage Society at their Annual General Meeting last week. Well-deserved!

## Lecture Series

The first of Lake Country Museum's lecture series of 2013 was presented by James Baker on February 24 at the Creekside Theater. The topic was ***Digging up the Past, Archaeological sites - Pelmewash & Others.*** James Baker, long-time mayor of Lake Country, BC is also an Associate Professor Emeritus of Archaeology at the University of British Columbia. The combined backgrounds of James Baker extended significant expertise to a very well attended event.



## Pelmewash's Winter Trails



## Memorial

A long time Winfield and Okanagan Centre Resident,



**Connie King** passed away peacefully in Kelowna at age 97. Connie was born in the Parish of Lumphanan, Scotland. At age 5, she, with her family, emigrated to Canada and lived at Fintry. Connie had many fond memories of her time at Fintry, where she

and sister Dorothy rode their ponies to school at Ewing Landing. She met and then married her husband George in Vernon and in later years raised their family in Winfield. Connie worked for years in the office of the Vernon Fruit Union - Woodsdale. In the 1950's she and her friends were involved in the Women's Institute that created and published the original Winfield Calendar and those same friends were avid bridge players for years. In 1974 Connie and George moved from their orchard in Winfield and spent their retirement years in Okanagan Centre.

Connie will be remembered for her quick wit, feistiness and unwavering loyalty to her family and friends.

### Museum News

The Patio Café will be open for business on Saturday May 11, 2013.

### Summer Hours

Lake Country Museum will be open on Mothers Day on Sunday May 12, 2013 and officially open seven days a week for the summer. Hours of operation will be 10:00am - 4:00pm.

### Upcoming Events

The annual Centre Piece tea is scheduled to take place on August 25<sup>th</sup>, 2013.

### Lake Country Museum

11255 Okanagan Centre Road West  
Lake Country, BC  
Phone 250-766-0111.

**Admission is by donation**

